

FOR SALE

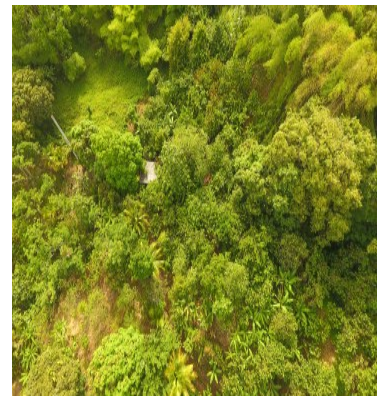
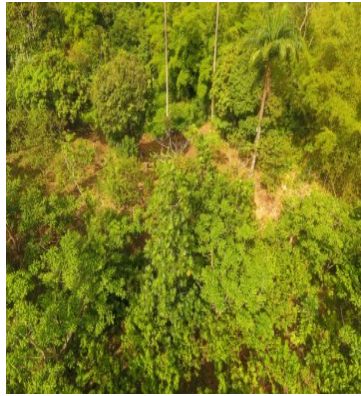
\$ 695,000.00 USD

Grenada - Saint John

Gouyave

Listing ID: 00019034250

Located at Maran Estate St. John's we offer this rather unusual parcel of Agricultural/Residential land. This land was formally a part of Maran Estate. The area is approximately 7.75 acres. A Natural Perennial Spring exists (commonly referred to as London Spring). The parcel of land is serviced by motorable access roads. The lot is presently cultivated with Cocoa, Sour soups, Golden Apples and Bananas as well as a wide range of crop and mature bearing fruit trees. •Gentle slopes •Scenic sea views •Machine usable and with Commercial applications •Easy accessibility •Infrastructural amenities available



SEE THIS PROPERTY ON THE MAP



HYACINTH MCBARNETTE
Sales Agent
473 4071704
hyacinth@remax-grenada.com
<http://www.remax-grenada.com/>



RE/MAX GRENADA LTD

Grand Anse PO Box 48 St Georges, Grenada

Each office is independently owned and operated