

FOR SALE

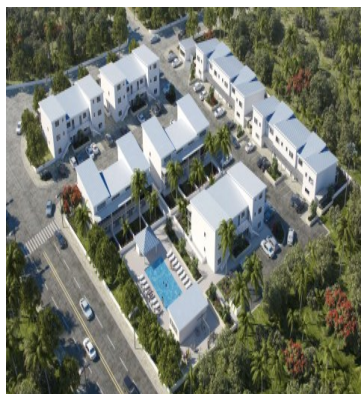
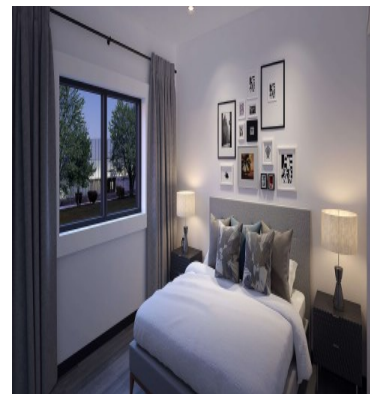
CD\$ 240,000.00 KYD

Cayman Islands - Grand Cayman

George Town

Listing ID: 00003690019

Downtown Reach is a new residential development just five minutes from George Town right off the Linford Pierson Highway. Closely located to the amenities of George Town and the Grand Harbour area, the price point and locale are unbeatable. Phase 1 is set to be sold out before ground breaking in May 2019. This is an opportunity to purchase your first home at significant savings with stamp duty exception for first time Caymanian buyers. It is equally a great opportunity if you are seeking an investment property with a projected ROI of between 5 to 7%. The initial phase will include 30 one bedroom units and at the time of listing, there are 2 remaining units at the pre-construction prices.



[SEE THIS PROPERTY ON THE MAP](#)



JENNIFER POWELL

Sales Agent

1345 9496170

jennifer.powell@remax.ky

<http://remax.ky/>

RE/MAX CAYMAN ISLANDS

PO Box 30189 215B West Bay Rd 7 Mile Shops Grand Cayman, KY1-1201

Each office is independently owned and operated